

105x148mm

PANTONE 520 C



## Intim gel sa uljem čajevca

**Sastojci/Ingredients:** Aqua, Poloxamer 407, Propylene Glycol, Melaleuca Alternifolia Oil, Panthenol, Lactic Acid, Sodium Benzoate, Thymol, Limonene

SRB MNE BIH

**Delovanje:** Tea Tree Balance® Intim Gel sadrži ulje čajevca, timol i pantenol u biodhezivnoj gel podlozi. Ulje čajevca, čajnog drveta (*Melaleuca Alternifolia Oil*) je poznato i cenjeno kao prirodni antiseptik koji deluje na bakterije i gljivice zahvaljujući svom složenom sastavu i prisustvu cineola. Pomaže kod raznih stanja na koži i sluzokoži: akni, iritacija kože, herpes simplex, ekcema.

Abordžini su ga vekovima unazad upotrebljavali tako što su mleli lišće ove biljke i u vidu paste nanosili na rane. Upotrebljen u preparatima za intimnu regiju učestvuje u očuvanju prirodne vaginalne flore. Timol pokazuje antimikrobna svojstva pa u kombinaciji sa uljem čajevca, povećava efikasnost Tea Tree Balance® Intim Gela u borbi protiv mikroorganizama. Pantenol doprinosi brzijoj regeneraciji vaginalne sluzokože i održava njenu prirodnu vlažnost. Biodhezivna gel podloga ima epitelizirajući efekat i omogućava postepeno i kontinuirano oslobađanje aktivnih sastojaka intim gela na mestu primene. Istovremeno ova podloga omogućava bolju adheziju, vezivanje delujućih supstanci na sluzokoži. Upotrebom Tea Tree Balance® Intim Gela ublažavaju se neugodnosti koje prate upale i infekcije kao što su: svrab, peckanje, suvoća, crvenilo i neprijatan miris.

**Tea Tree Balance® Intim Gel se preporučuje:**

- ✓ Kao pomoć kod upalnih procesa vaginalne sluzokože
- ✓ Kao pomoć kod infekcija praćenih pojačanim sekretom
- ✓ Kod svih stanja kada je ravnoteža vaginalne sluzokože poremećena
- ✓ Preventivno kod osoba sklonih infekcijama intimne regije

**Način upotrebe:** Aplikovati vaginalno, uveče pred spavanje, u ležećem položaju. Nakon otvaranja tube i navijanja aplikatora, blagim pritiskom istisnuti 2 cm gela (doza za jednu aplikaciju) duboko u vaginu. Količina gela u tubi je dovoljna za 5 aplikacija. Kod površinskih rana gel nanositi u tankom sloju 2-3 puta u toku dana.

**Upozorenja:** Samo za spoljašnju upotrebu. Ne preporučuje se primena preparata u slučaju preosetljivosti na neki od sastojaka. Trudnicama se ne preporučuje primena gela. Čuvati van domašaja dece.

**Način čuvanja:** Čuvati na tamnom mestu, na temperaturi do 25°C.

**Upotrebljivo do:** 48 meseci od datuma proizvodnje.

Datum proizvodnje je sadržan u serijskom broju utisnutom na varu tube i odštampan je na kutiji.

**Pakovanje:** Tuba sa 20 ml gela u kutiji sa dva aplikatora. Drugi aplikator je priložen kao rezervni, u slučaju gubitka ili oštećenja.

**Proizvođač:** ESENSA d.o.o.,  
Vilne vode bb, Beograd, Republika Srbija

**Zemlja porekla:** Republika Srbija

JP1

Informacije možete dobiti besplatnim  
pozivom iz Srbije na broj: **0800 200 300**  
ili putem e-mail-a: [informacije@esensa.rs](mailto:informacije@esensa.rs)



EN

**Method of functioning:** **Tea Tree Balance® Intim gel** contains tea tree oil, thymol and panthenol in a bioadhesive gel base. Tea tree oil (*Melaleuca Alternifolia Oil*) is well-known and prized as a natural antiseptic that acts against bacteria and fungi due to its complex composition and the presence of cineole. It helps with various conditions of the skin and mucous membrane: acne, skin irritation, herpes simplex, eczema. Aborigines used it centuries ago by grinding the leaves of this plant and applying it to wounds in the form of a paste. When used in preparations intended for the intimate region, it plays a role in the maintenance of natural vaginal flora. Thymol shows antimicrobial properties, so in combination with tea tree oil, it increases the effectiveness of **Tea Tree Balance® Intim gel** in the fight against microorganisms. Panthenol contributes to faster regeneration of the vaginal mucosa and maintains its natural moisture. The bioadhesive gel base has an epithelializing effect and enables the gradual and continuous release of the active ingredients of the intimate gel at the site of application. At the same time, this base enables better adhesion, and binding of active ingredients onto the mucous membrane. The use of **Tea Tree Balance® Intim gel** alleviates discomfort that accompanies inflammation and infections such as: itching, tingling, dryness, redness and unpleasant odor.

**Tea Tree Balance® Intim gel is recommended:**

- ✓ As an aid in cases of inflammatory processes of the vaginal mucosa
- ✓ To help in cases of infections accompanied by increased secretion
- ✓ In all conditions where the balance of the vaginal mucosa is disturbed
- ✓ For use as prevention for individuals prone to infections of the intimate region

**Instructions for use:** Apply vaginally, in the evening before sleeping, while in a horizontal position. After opening the tube and screwing on the applicator, squeeze out 2 cm (dose for one application) of gel using gentle pressure. One tube has enough gel for 5 applications. For superficial wounds, apply the gel in a thin layer 2-3 times a day.

**Warnings:** For external use only. Not recommended for application in cases of hypersensitivity to any of the ingredients. Not recommended for persons who are pregnant. Keep out of reach of children.

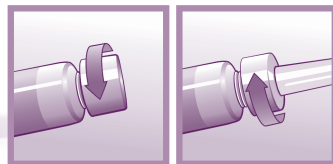
**Storage conditions:** Store in a dark place, at a temperature below 25°C.

**Expiry date:** 48 months from the date of manufacture. The date of manufacture is contained in the serial number imprinted on the weld of the tube and printed on the box.

**Packaging:** Tube with 20ml of gel in a box containing two applicators. The second applicator is included as a spare, in case of loss or damage.

**Manufacturer:** Esensa d.o.o., Viline vode bb, Belgrade, Republic of Serbia

**Country of origin:** Republic of Serbia



[www.esensa.rs](http://www.esensa.rs)

